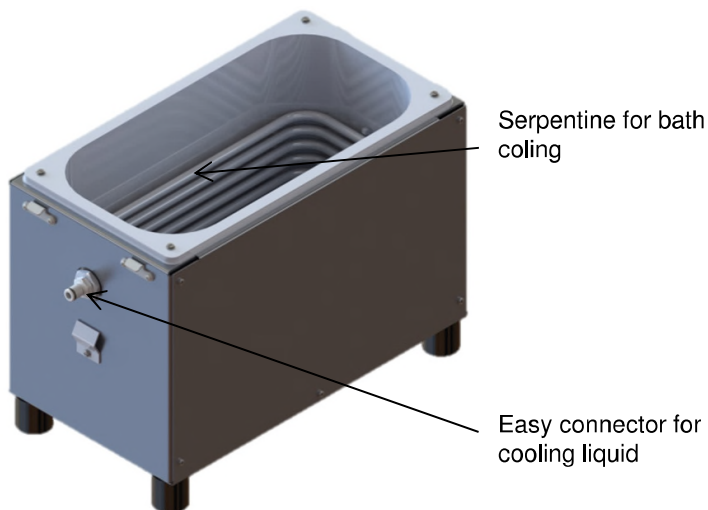
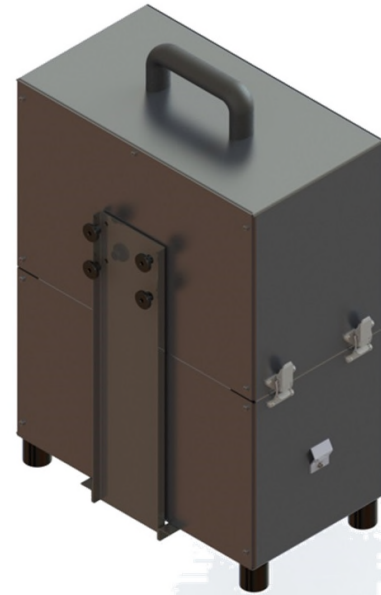


Isokinetic Heated Probe

Cooled impingers bath

Main Characteristics :

- Easy to install on isokinetic heated probe
- Easy to transport with its protection cap
- Cooled with CDL chiller – no needs to bring ice on stack for cooling
- Designed to contain glassware sets according to:
 - USEPA M5 (dusts)
 - USEPA M8 (Sox),
 - USEPA M13A (HF),
 - USEPA M26A (HCl and HBr),
 - USEPA M29 (Heavy metals)...
- Designed to contain main line and derived line according to:
 - EN14385 (heavy metals)
 - EN13211 (Hg)
 - EN1911 (HCl)
 - EN14791 (Sox)



Product	Code
Impingers cooled bath	ES400-0001